

On the PC

Windows 7 64bit

Microsoft Office Outlook 2003 PRO SP3

LAN access to server convergence without passing by the proxy server ; just having right for passing throu the firewalls to join the server.

On outlook

Calendar named “Calendrier-Convergence7)”

Tasks

Contacts : no sync needed

Mails : no sync needed

No Exchange server

Server side

Server : SUN Convergence 7 no apache server in front

LDAP : Open LDAP on another physical server

Options in iCal4OL :

Who

iCal4OL: Sync Solution for Outlook © ical4ol@gutentag.ch

Options Maintenance Sync Fields Google Contacts Defects Configurations

Who What 1. How 1.1 More 2. How 2.1 More Run

Welcome - please enter your personal data

Change language / Sprache wechseln / Cambia la lingua: English

CalDAV Autoconfiguration for: EPL / EGroupware Darwin CalendarServer Others

Google Sync Autoconfiguration: Google Sync Configuration Assistant

Manual entry for Google Sync and other Websolutions (Import/Export/CalDAV/WebDAV/GroupDAV)

Fullname (as on server): YL

E-Mail (as on server): yannick.lejeail@ac-rouen.fr

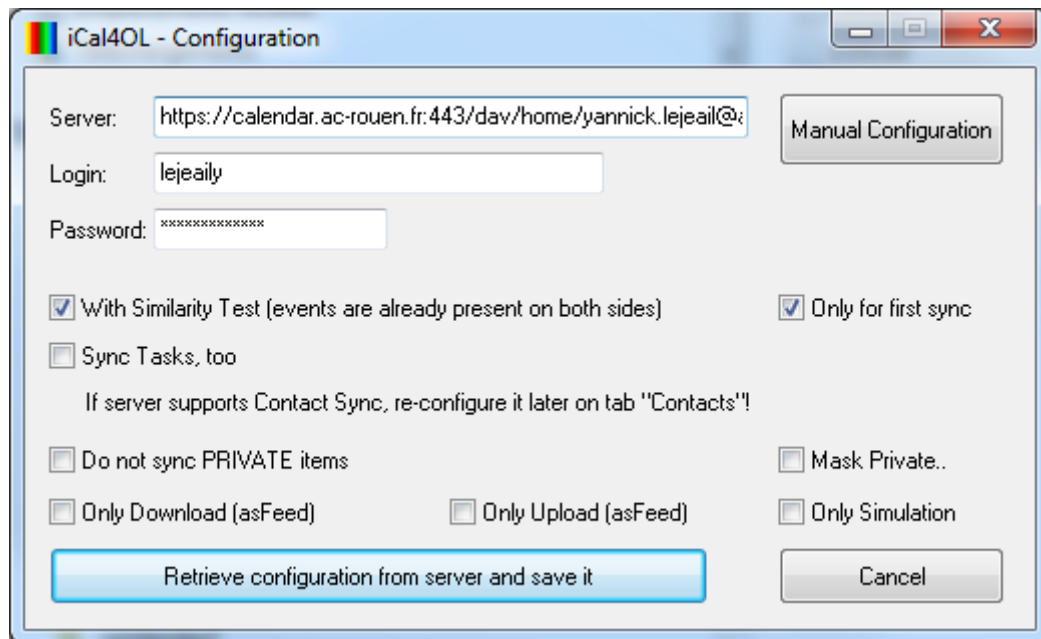
Your timezone: Europe/Paris +0100 +0200 -1SU;3 -1SU;10

Documentation: <http://ical.gutentag.ch/documentation.html>

Order iCal4OL (generate order code) Version 2.12.2 Check for Updates

Open/New Save Save as.. Save & Exit Next

Others



iCal4OL - Configuration

Server:

Login:

Password:

With Similarity Test (events are already present on both sides) Only for first sync

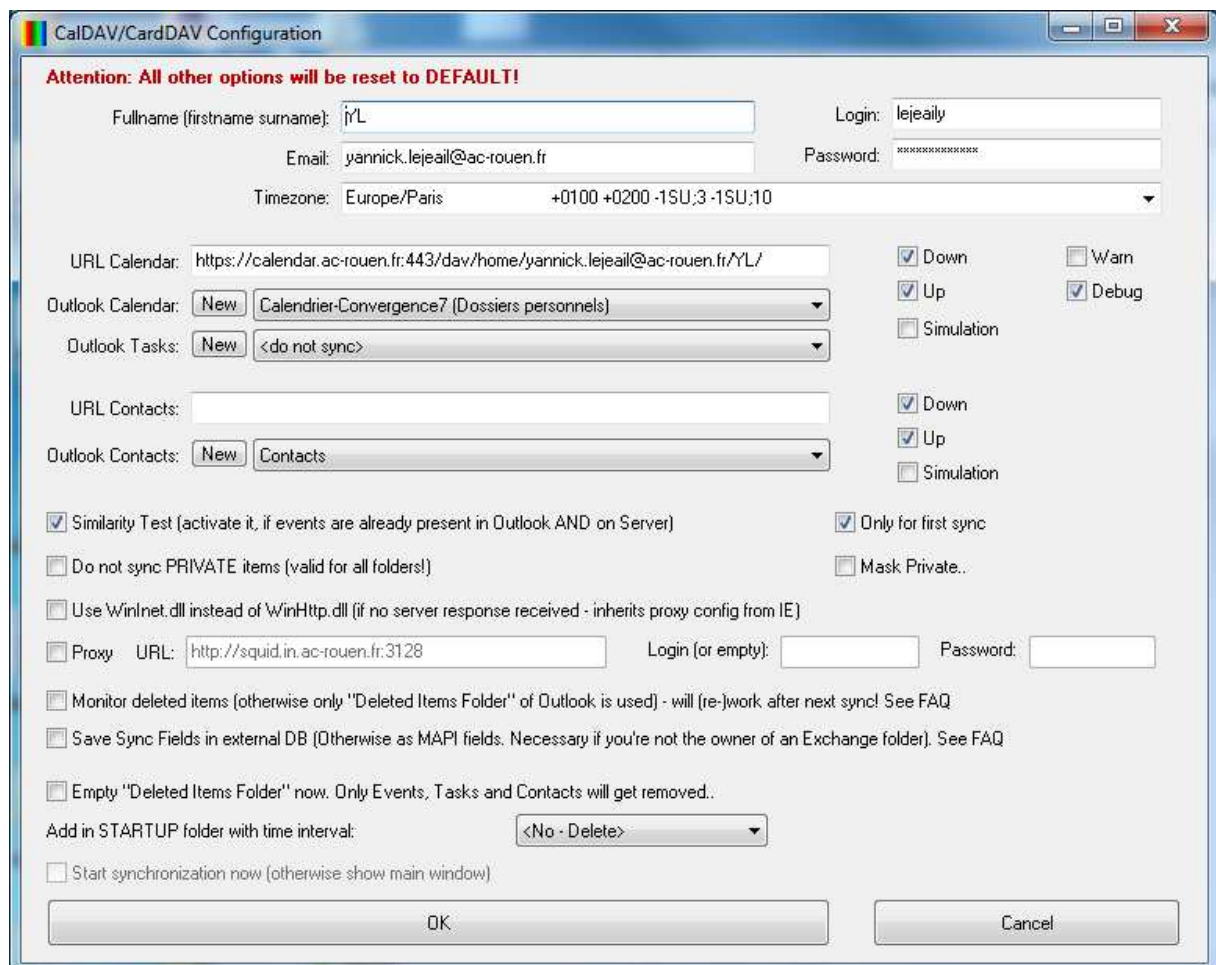
Sync Tasks, too

If server supports Contact Sync, re-configure it later on tab "Contacts"!

Do not sync PRIVATE items Mask Private..

Only Download (asFeed) Only Upload (asFeed) Only Simulation

Manual Configuration



CalDAV/CardDAV Configuration

Attention: All other options will be reset to DEFAULT!

Fullname (firstname surname): Login:

Email: Password:

Timezone:

URL Calendar: Down Warn

Outlook Calendar: Up Debug

Outlook Tasks: Simulation

URL Contacts: Down

Outlook Contacts: Up Simulation

Similarity Test (activate it, if events are already present in Outlook AND on Server) Only for first sync

Do not sync PRIVATE items (valid for all folders!) Mask Private..

Use WinInet.dll instead of WinHttp.dll (if no server response received - inherits proxy config from IE)

Proxy URL: Login (or empty): Password:

Monitor deleted items (otherwise only "Deleted Items Folder" of Outlook is used) - will (re-)work after next sync! See FAQ

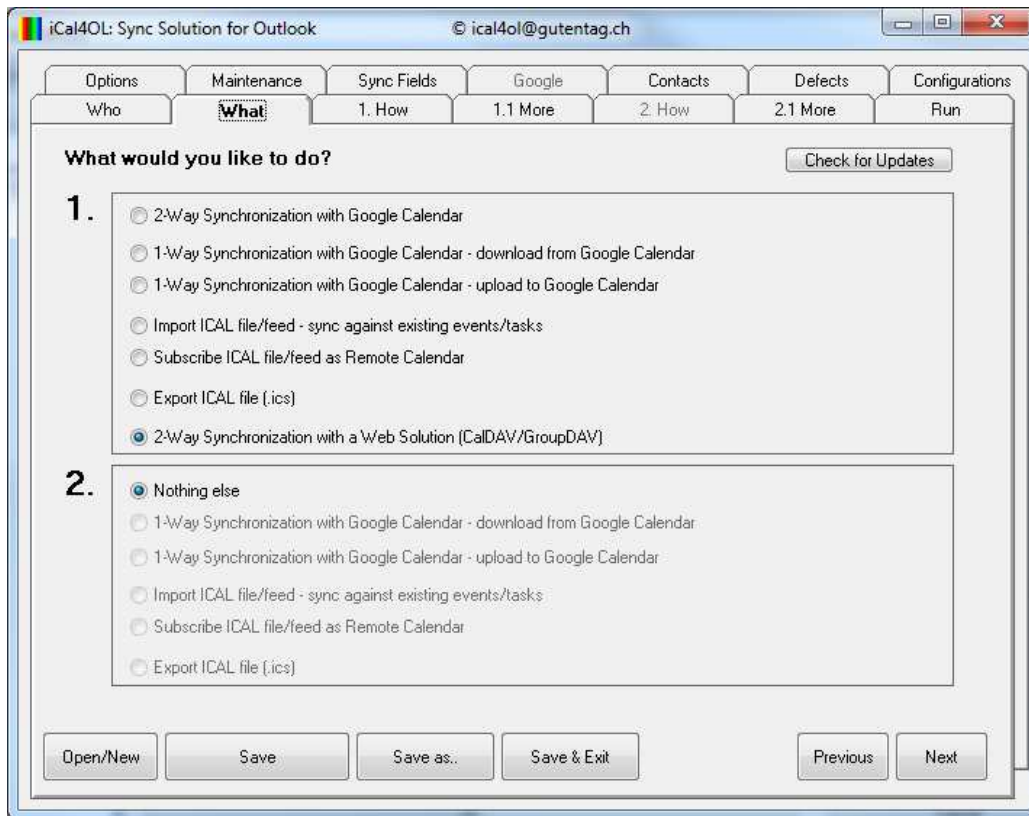
Save Sync Fields in external DB (Otherwise as MAPI fields. Necessary if you're not the owner of an Exchange folder). See FAQ

Empty "Deleted Items Folder" now. Only Events, Tasks and Contacts will get removed.

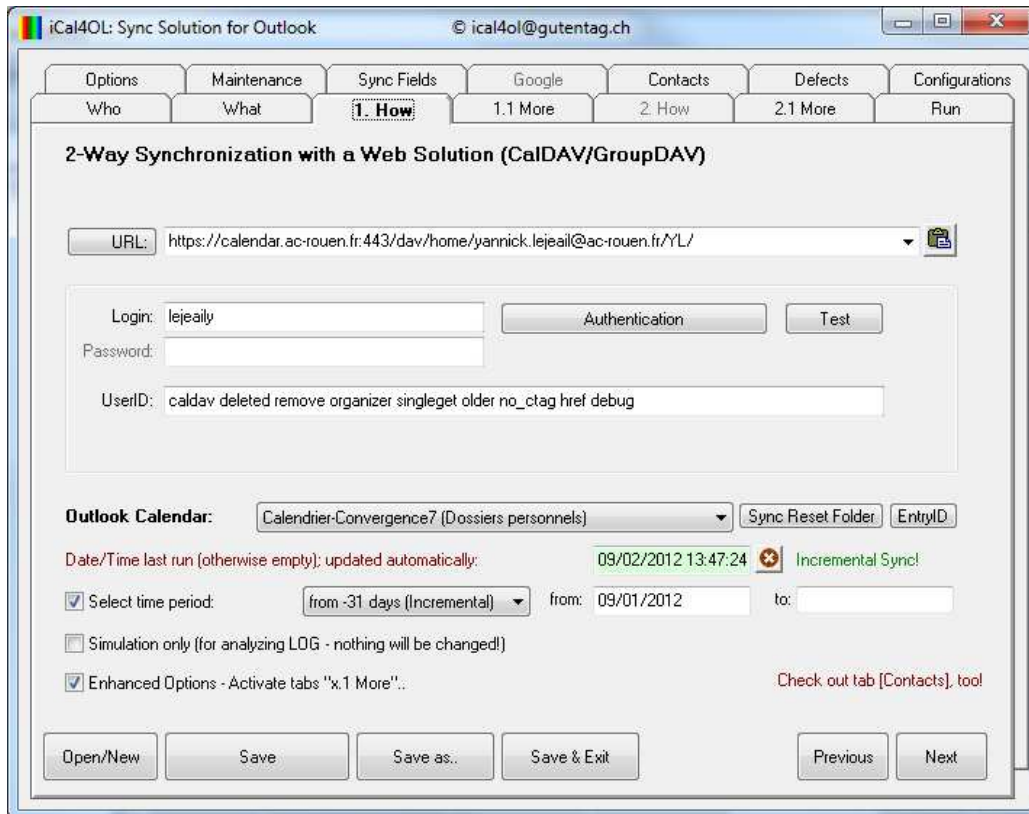
Add in STARTUP folder with time interval:

Start synchronization now (otherwise show main window)

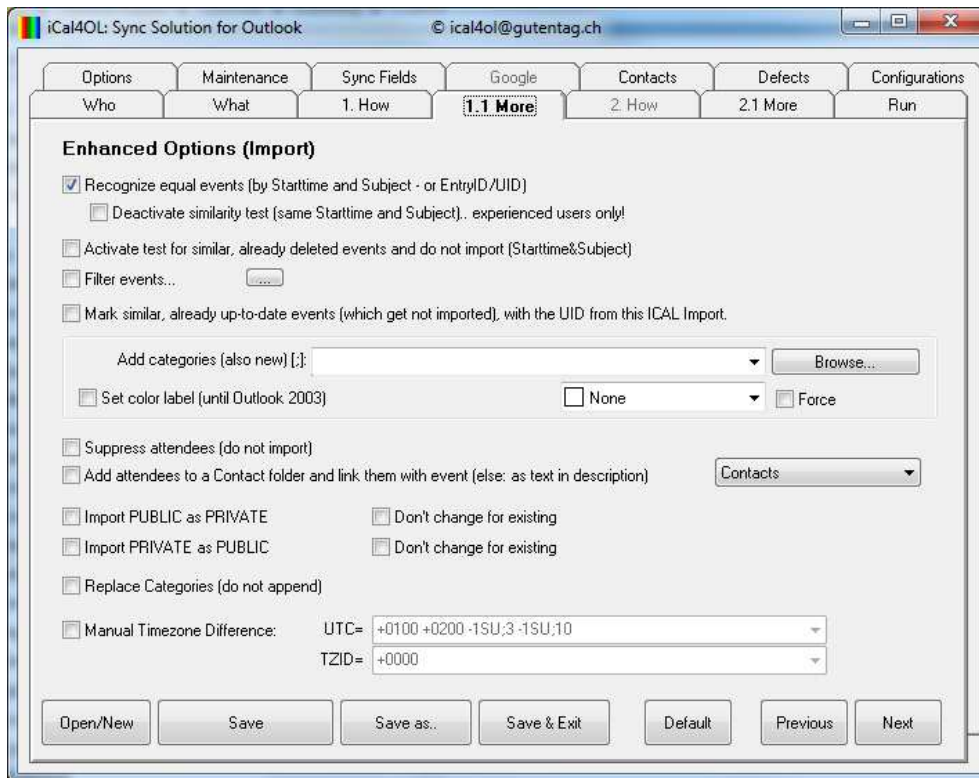
What



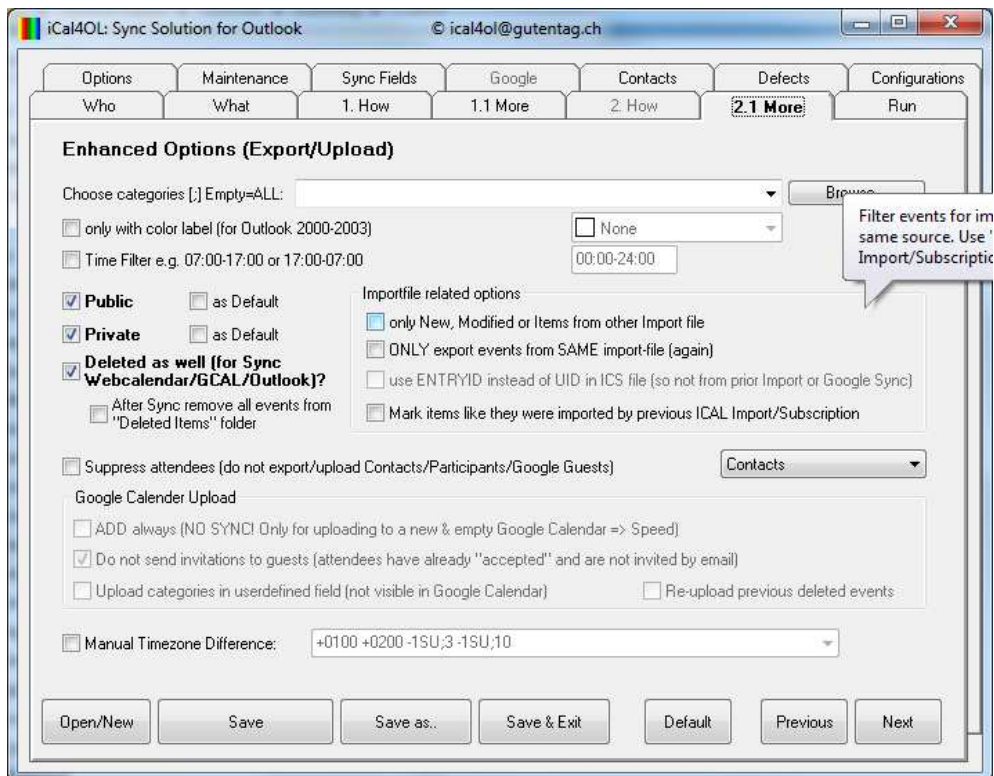
How



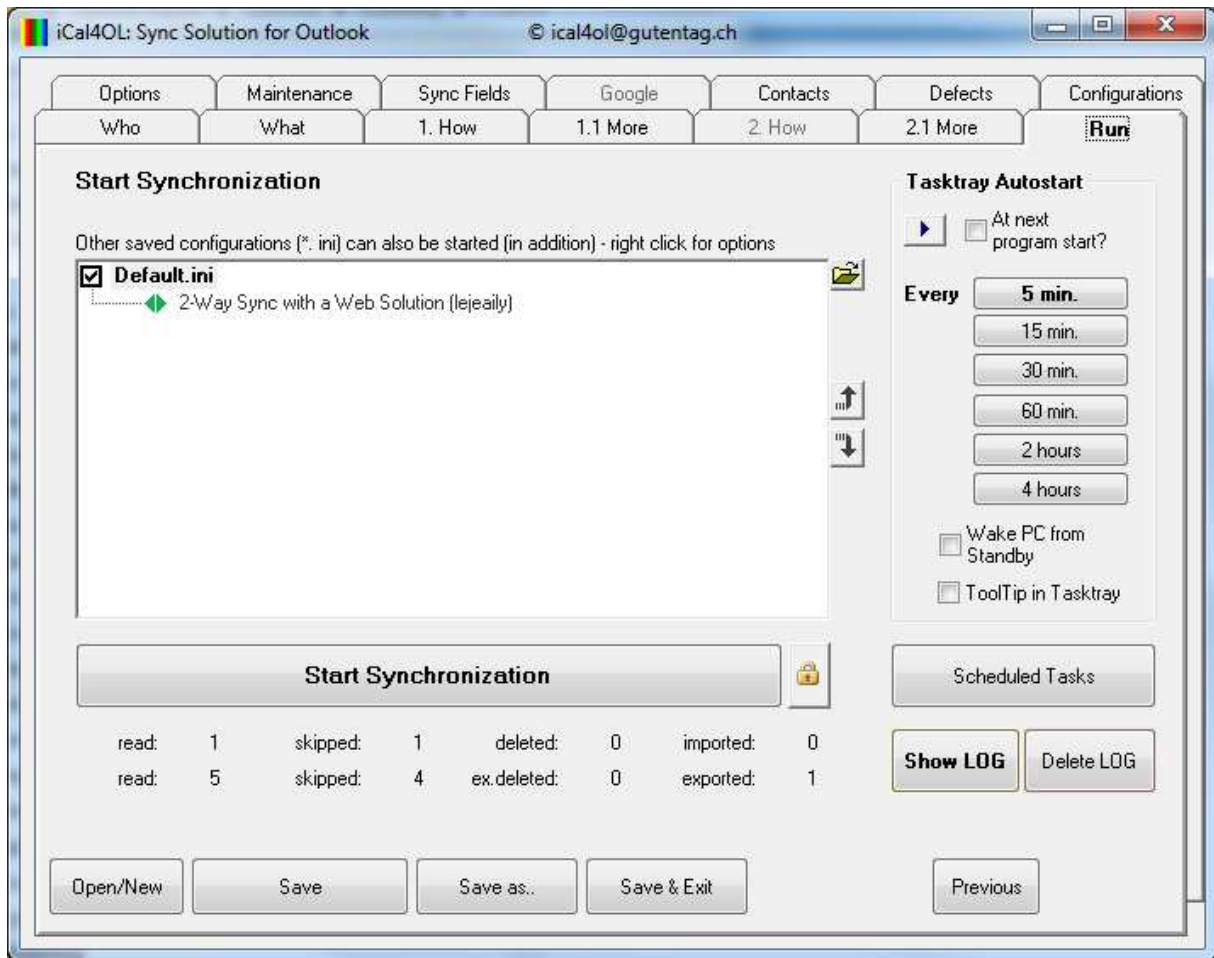
More 1.1



More 2.1



Run



Options – Proxy

